

Technical data

		CS120i	CS150i	CS250i
Output with wood pellets (with approx. 7% water)	BTU	410,000	580,000	921,000
Output with wood chips (with approx. 25% water)	BTU	307,000	478,000	819,000
Output with grain (with approx. 15% water)	BTU	307,000	478,000	819,000
Minimum output at pause firing*	BTU	18,800	25,600	42,700
Efficiency at nominal output	%	90	91	91
Efficiency at partial load**	%	89	88	88
Water content boiler	%	11	11	11
Flue gas outlet	Ø	Ø8.46	Ø8.46	Ø9.84
Supply connection	-	2"	2"	2½"
Return connection	-	2"	2"	2½"
Sprinklerconnection	-	½"	½"	½"
Auger connection	in.	OK7.1/8.9	OK7.1/8.9	OK7.1/8.9
Necessary chimney draft	Pa	20	20	20
Mains connection: 3x400V+0+PE – 16A	-	---	---	---
Power consumption approx.	W	250	340	422

* Indicative minimum load at pause firing

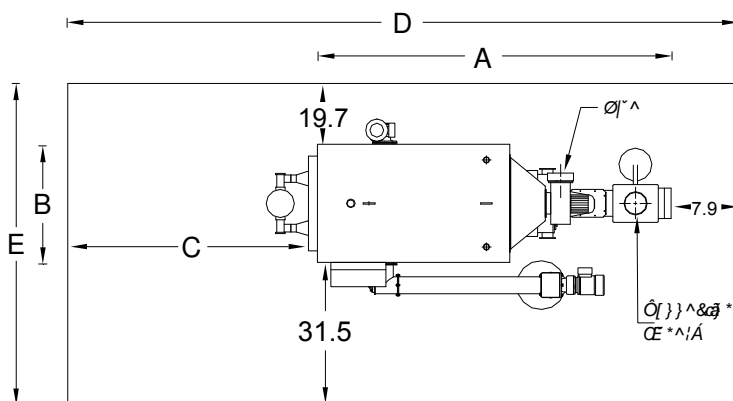
** Partial load is less than 30% of nominal load (measured at The Danish Technological Institute)

Measures

	System dimensions		Free space	Recommended dim.	
	A	B		D	E
CS120i	117	39.4	69.3	194.1	90.6
CS150i	134.3	41.7	70.9	213	93
CS250i	154.7	41.7	86.6	249.2	93

Measured in inches

*When using the automatic flue pipe cleaning system, or the rotary brush C and E can be reduced.



Boiler room seen from above - measured in inches.

Authorized Dealer:

Biomass Systems Supply
A Division of Global Sales Group, LLC
P.O. Box 1835 ~ Chico, CA 95927 USA
For more information please contact us at 877-474-5521
Ofc: 530-893-2444 ~ Fax: 530-893-2244
Email: info@biomasssystemssupply.com ~ www.BiomassSystemsSupply.com

We reserve the right to make changes May 2013