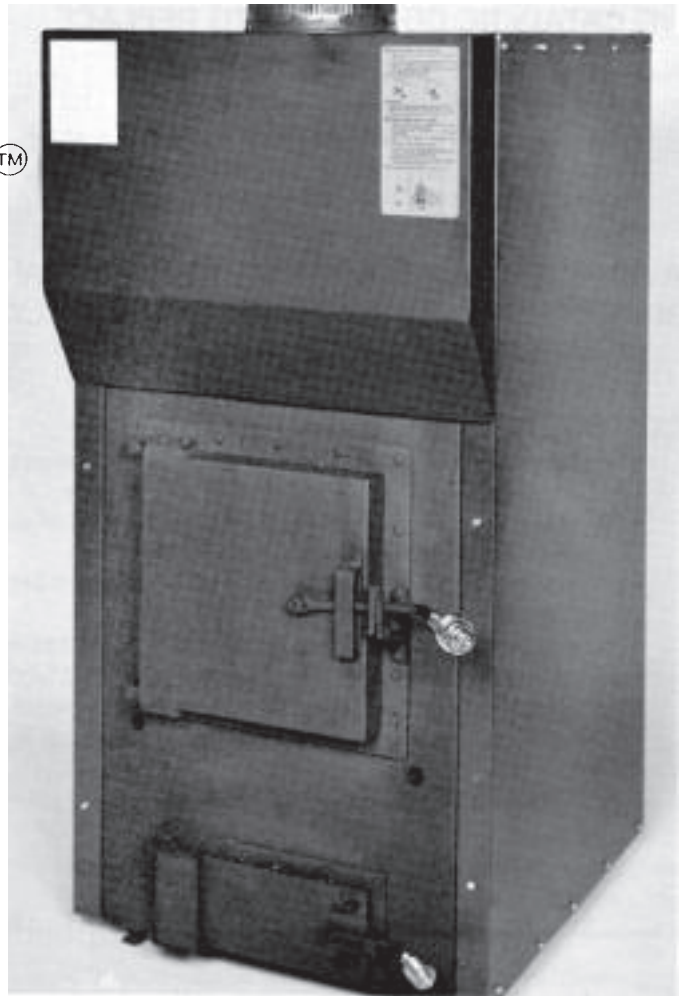
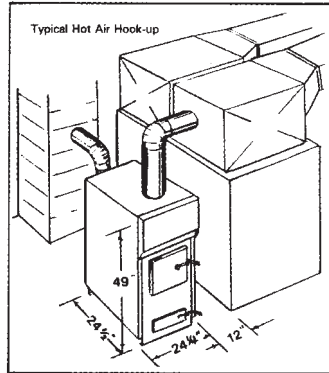


# KUUMA<sup>TM</sup>

## VAPOR-FIRE ADD-ON MODEL 200

*IT'S  
TRUE...*

Your creosote  
worries are  
virtually over!



- No visible smoke up to 98% of the time
- No catalytic converters
- No gimmicks
- Logs burn from front to rear
- Natural burning of the logs under controlled condition
- Tested by PFS Laboratory & Intertek Testing for emission and safety
- UL #391
- Approved for the 2010 Home Energy Efficient Tax Credit

**NO SMOKE  
NO CREOSOTE**

***Less than 1/2 gr./hr. emissions  
Up to 98.9% combustion eff.***

“KUUMA” principle – the logs burn from front to the back. Primary air ignites only the amount of wood that will combust with the available oxygen within the fire chamber. Electronic control precisely regulates the amount of preheated air admitted into fire chamber. Because the gases and volatile liquids burn at approximately 1000°F it is important that the secondary air is preheated before introduced into the secondary zone. The fire burns with a nice soft low flame resulting in a highly efficient burn for a long period of time. You don't need a raging fire to produce a clean burn and useful heat.

**LAMPPA MANUFACTURING & DISTRIBUTING CO., INC.**

P.O. BOX 422, TOWER, MINNESOTA 55790

218-753-2330 • 1-800-358-2049

<http://www.lamppakuuma.com>

[lamppmfg@gmail.com](mailto:lamppmfg@gmail.com)

# WHY SHOULD YOU OWN A KUUMA VAPOR-FIRE MODEL 200?

## 1. NO CATALYTIC CONVERTER TO REPLACE

## 2. NO SMOKE UP TO 98% OF THE TIME

- In simple terms, no smoke - no creosote.
- No visible smoke whenever the temperature is above 32°F outside – only condensation, when the temperature is below 32°F. (Similar to a clothes dryer.)
- Virtually eliminates cleaning chimney.

## 3. AVERAGE STACK TEMPERATURE IS BELOW 350°F INTERNALLY AND 200°F EXTERNALLY

- Because of the low stack temperature, the heat extraction efficiency is extremely high.

## 4. COMBUSTION EFFICIENCY

- Heat sensor monitors internal fire chamber temperature continuously.
- Electronic control precisely regulates the amount of air admitted into the fire chamber. **Adjustable.**
- Primary and secondary air is superheated before it enters the fire chamber.
- Front to rear burning of the logs assures a controlled burn and consumes less wood. (This saves money and labor.)
- Converts the wood to a gas and then burns the gases.
- 30-40,000 BTU per hour – up to 10 hrs.\*\* Heats up to 3200 sq. ft.
- Will replace a 100,000 BTU\* oil furnace.

## 5. 465 CFM BLOWER

## 6. BRICK LINED COMBUSTION CHAMBER

Combustion chamber surrounded with thick ceramic insulation.

## 7. WARP-FREE DOOR WITH:

- Adjustable latch and hinges.
- Cool door handle.
- 1/8 inch stainless steel heat shield on the inside of door.
- Heavy 14-ga. outer shell.
- Extra heavy cast iron door frame with a 12 x 12 inch opening.
- Access door with 1 1/2 inch insulation.

## 8. MANY SAFETY FEATURES

- Alarm system to warn if the temperature inside the fire chamber is excessively high.
- Cool outside shell.
- Cool door handles.

## 9. NO SMOKE MEANS LESS AIR POLLUTION AND LOWER EFFLUENT EMISSIONS

\* Generally furnaces rated at 100,000 BTU per hour operate less than 1/3 of the time, with an actual heat output of less than 33,000 BTU/hr.

\*\* Estimate. Could vary with different types of installation and wood.

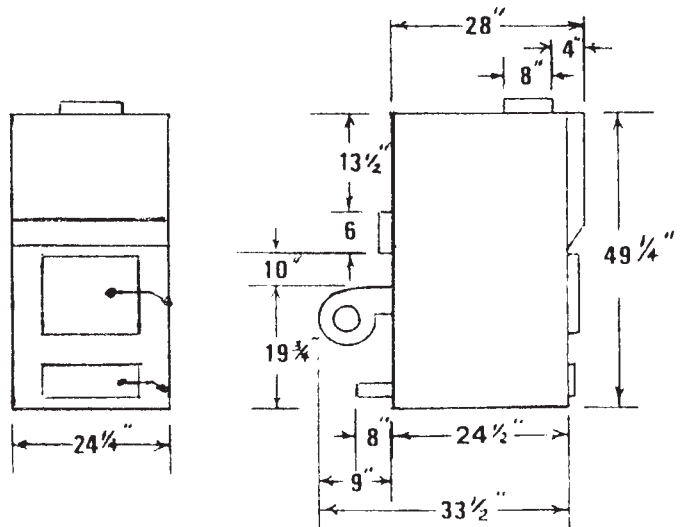
## Specifications

### VAPOR-FIRE MODEL 200

Dimensions	24 1/4" W x 40 1/2" D x 47" H
Flue Size	.6" Diameter
Heat Outlet Size	.8" Diameter
Fire Door Opening	12" W x 12" H
Draft Control	Automatic
Draft Control Type	C100A
Ashpan Size	9 3/4" W x 16" L x 3 1/2" H
Fire Chamber	18 1/2" L x 15 1/2" W x 20" H
Maximum Wood Length	.17"
Fire Chamber Lining	Brick
Grate	3/4" Cast Iron
Fan Control	Dayton 4E116 (Adj.)
Draft Requirement	.04" - .06" W.C.
Power	15 Amps, 120 V, 60Hz, #14 AWG Wire

#### Clearances to Combustibles

Side	.12"
Front	.48"
From the Flue Pipe	.18"
Weight	.525 pounds
Fuel Type	Wood Only
Chimney Requirement	.6" Class "A"



SAFE • RELIABLE • DEPENDABLE

