





# HISTORY OF HECO & ABOUT US

The Heco (pronounced Hee-coh) cookstove was born from an idea that Amos Stoltzfus, one of the co-founders here at Breeo, had back in 2012. At the time, he was the head of Research & Development at DS Stoves, a local stove shop here in Lancaster, Pennsylvania. It was there that he learned of an opportunity of producing cookstoves to a receptive industry. Not backing down from the challenge, Amos made the decision to start his own company and in the years that followed, he worked diligently to build a team and design a premium wood-burning cookstove that was reliable and clean-burning. Today, Breeo prides itself in offering innovative wood-burning technology to both the cookstove and fire pit markets.



As a company, Breeo values providing only the highest quality products and customer service to their customers. The Heco cookstove was designed to be a simple, high-quality, low-maintenance cookstove that is guaranteed to last for a lifetime of use. Heco cookstove customers should never need to replace their entire stove, but can easily replace parts, if needed. Each stove utilizes a secondary airflow which creates secondary combustion, burning off it's own smoke, and making for less cleanout. We hope that every Heco cookstove customer will come to realize that the Heco brand is one on which they can

**SIMPLY RELY.**



## 2000 Stove Specifications:

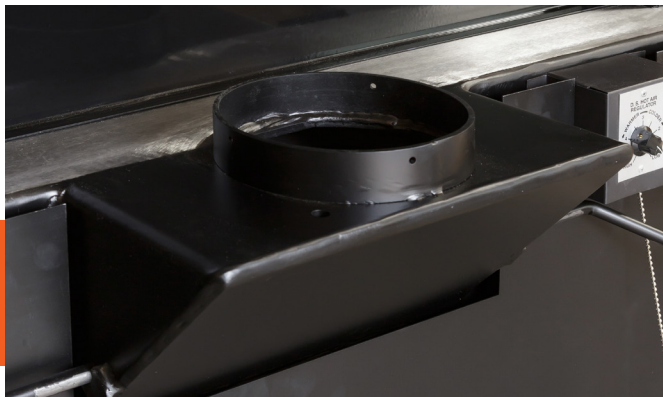
Cooking Surface:	46"W x 20 <sup>1/4</sup> "D
Stove Size with Handles:	50 <sup>1/2</sup> "W x 33"D
Height to Warming Shelf:	50 <sup>1/4</sup> "
Oven Dimensions:	22"D x 16 <sup>1/2</sup> "W x 14"H
Firebox Dimensions:	19"D x 20"W x 20"H
Door Openings:	15 <sup>1/2</sup> "W x 12 <sup>1/2</sup> "H
Exhaust size:	7"
Fuel:	Wood Only
BTU rating:	85,000
Heating Area:	up to 2,500 sq. ft.
Total Weight	700 lb.
Standard Bi-Metal Draft Regulator	
Solid Polished Steel Cooktop	

### Options:

Glass or Solid Doors  
22 Gallon Water Reservoir

61" x 48" Floor Protector Required  
Non-UL Listed

Our 2000 Series is our base model, wood-burning-only cookstove. Each 2000 Series stove comes standard with a warming shelf and solid polished steel top. Customers can choose between glass or solid doors for both the firebox and oven doors. As is standard for each of the Heco cookstoves, each stove includes air wash control, easy-access cleanout and a poker rod and ash tray.



Model Pictured:  
HC2000CS-GFD

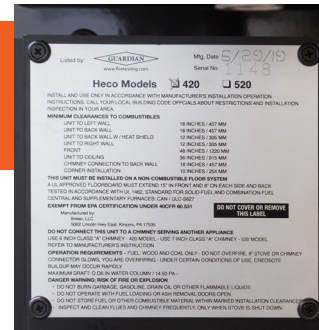
# 2000 SERIES



Model Pictured:  
HC420CS-SD-3ET



# 420 SERIES



Both the 420 & 520 Series Are UL Listed



420 & 520 Series Hot Air Regulator

## 420 Stove Specifications:

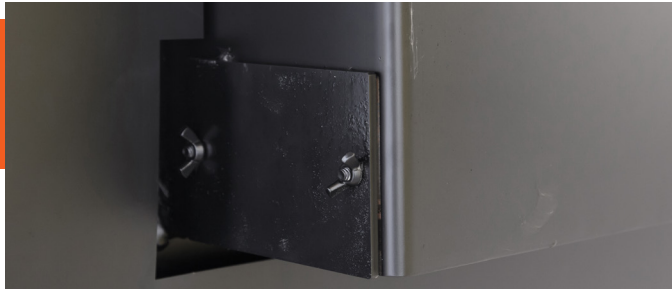
Cooking Surface:	42 <sup>1/4</sup> "W x 21"D
Stove Size with Handles:	47 <sup>1/4</sup> "W x 33 <sup>1/4</sup> "D
Height to Warming Shelf:	55 <sup>1/2</sup> "
Oven Dimensions:	21"D x 18"W x 13"H
Firebox Dimensions:	19"D x 12"W x 17"H
Door Openings:	12"W x 9 <sup>1/2</sup> "H
Exhaust size:	6"
Fuel:	Wood or Coal
BTU rating:	72,000
Heating Area:	up to 2,000 sq. ft.
Total Weight:	775 lb.
Standard Bi-Metal Draft Regulator	
58" x 48" Floor Protector Required	
UL Listed	

Please see page 6 for additional options.

Our 420 Series is the smaller of our two elite cookstoves. This stove is designed to burn either wood or coal and includes the standard warming shelf. Customization options for this stove include solid or glass doors, three different stovetop choices, and optional add-ons such as a summer grate, warming closet, and 22 gallon water reservoir. As is standard for each of the Heco cookstoves, each stove includes air wash control, easy-access cleanout and a poker rod and ash tray.



# 520 SERIES



420 & 520 Series Chimney Cleanout

Our 520 Series is the larger of our two elite cookstoves. The Heco 520 includes the same customization options as the Heco 420: solid or glass doors, three different stovetop choices, and optional add-ons such as a summer grate, warming closet, and 22 gallon water reservoir. The Heco 520 also includes the same standard items as our other stoves and is perfect for those with a larger home.

## 520 Stove Specifications:

Cooking Surface:	46 <sup>1</sup> / <sub>2</sub> "W x 21"D
Stove Size with Handles:	51 <sup>1</sup> / <sub>2</sub> "W x 33 <sup>1</sup> / <sub>4</sub> "D
Height to Warming Shelf:	53 <sup>1</sup> / <sub>2</sub> "
Oven Dimensions:	21"D x 18"W x 13"H
Firebox Dimensions:	19"D x 16"W x 17"H
Door Openings:	16"W x 9 <sup>1</sup> / <sub>2</sub> "H
Exhaust size:	7"
Fuel:	Wood or Coal
BTU rating:	90,000
Heating Area:	up to 2,500 sq. ft.
Total Weight:	840 lb.
Standard Bi-Metal Draft Regulator	
62" x 48" Floor Protector Required	
UL Listed	

Please see page 6 for additional options.

420 & 520 Series Rear Cleanout



420 & 520 Series Airwash Control



Model Pictured:  
HC520CS-SD-3ST

# FIREBOX & OVEN DOOR OPTIONS FOR 420 & 520 SERIES STOVES

## Oven Door Options:

Each stove comes with your choice of glass or solid oven door. If needed or desired, doors can be removed and replaced.



## Firebox Door Options:

Each stove comes with your choice of solid or glass firebox door. If needed or desired, doors can be removed and replaced.

# STOVETOP OPTIONS FOR 420 & 520 SERIES STOVES

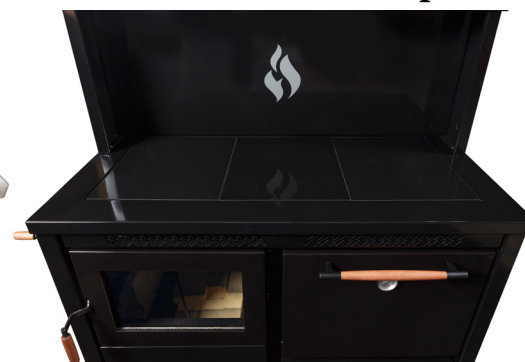
## 3 Panel Polished Steel Top



## Solid Polished Steel Top

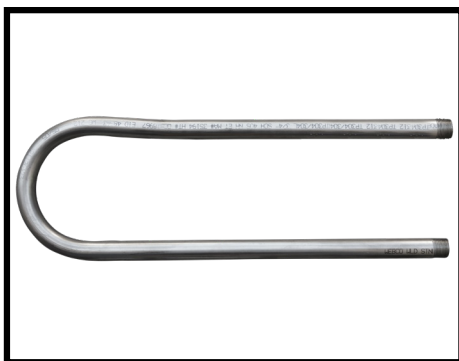


## 3 Panel Porcelain Top



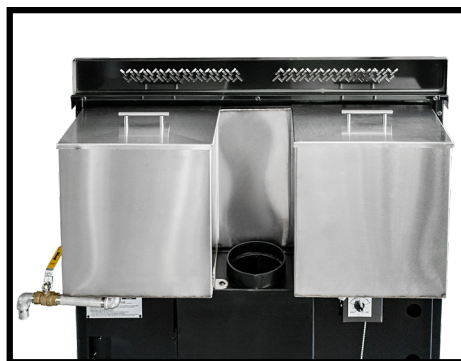
3 Panel Tops allow for the entire stove top (all three panels and the stovetop border) to be easily replaced. The Solid Polished Steel Tops are welded to the stove body.





### External Tank Coil

Our External Tank Coil is for use with heating water in an external tank, separate from the cookstove. This coil does not include tubing and fittings for hookup.



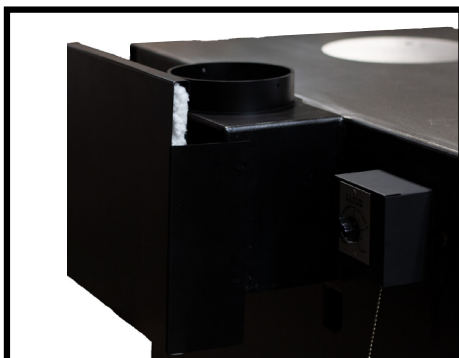
### 22 Gallon Water Reservoir

Our standard stainless steel reservoir mounts behind the warming shelf or closet. Plugs and spout included; works with Coil Kit (not included).



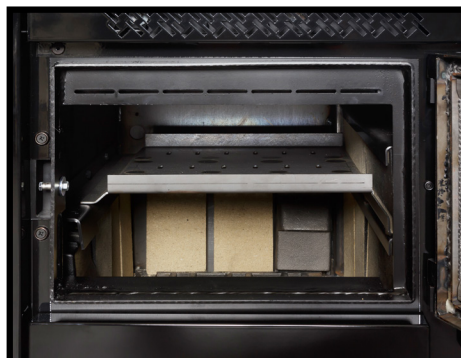
### Coil Kit

Our Coil Kit includes a 12" coil and fittings to connect the coil to the 22 Gallon Water Reservoir. This coil kit will be needed if use of hot water is frequent throughout the day.



### Heat Shield

Our Heat Shield creates an extra level of insulation which allows for the stove to be placed 12 inches away from a combustible wall, rather than the standard 18 inches.



### Summer Grate

Our Summer Grate elevates the fire in the fire box, allowing the stove to be used for cooking with a small fire in warmer weather.



### Warming Closet

The optional Warming Closet offers a closed door feature to the standard Warming Shelf, keeping food on the shelf warmer for longer.

# OPTIONAL ADD-ONS

Heco Cookstoves are manufactured by:

---

The logo for Breeo, LLC, featuring the word "breeo" in a bold, green, lowercase sans-serif font. The letters are closely spaced, with the "b" and "r" having a slightly rounded, modern feel. The "e"s are also rounded, and the "o" is a simple circle. The entire logo is centered between two horizontal lines.

L L C

[www.hecostoves.com](http://www.hecostoves.com) • 800.413.9848 • [info@breeollc.com](mailto:info@breeollc.com)

5002 Lincoln Highway  
Kinzers PA 17535