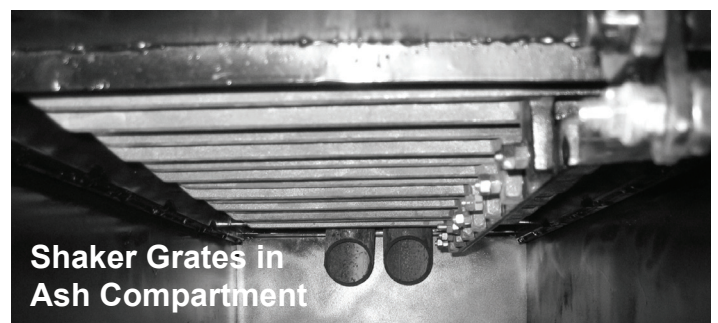
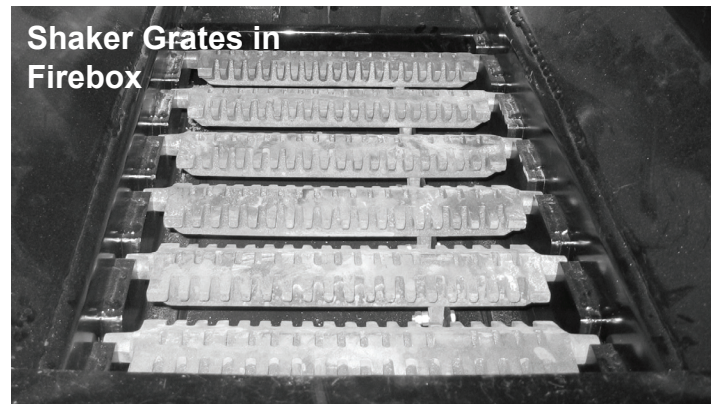


# Shaker Grate

## OPERATION AND MAINTENANCE INSTRUCTIONS



### OPERATION

1. To avoid buildup of ashes in the firebox, agitate shaker grates daily to allow ash to fall into the ash pan.
2. To operate the shaker grates, hook the shaker handle onto the external grate control and pump up and down (see Figure 1).
3. Leave grates flat during furnace operation to prevent large pieces of fuel from falling into the ash pan.
4. Check ash pan weekly and empty as necessary to keep ash from building up under the grates. Excessive ash will cause warping.
5. Keep ash door closed except when emptying the ash tray. Leaving the ash door open will cause the unit to overheat and could result in warping of the grates.



## FIRE BRICKS

Fire bricks are required for coal-burning units. Line the firebox floor beside the shaker grates with fire bricks (see Figure 2). Fire bricks can be ordered through your dealer.

## BURNING COAL

Before loading coal into the furnace, start a small fire. After the fire is burning briskly, add Pro-Fab approved coal up to the top of the fire bricks (see Figure 2).

**Coal level must not extend above the fire bricks or the bottom of the door frame.**

## GRATE REPLACEMENT

Replacement shaker grates may be purchased from your dealer. Before replacing a shaker grate, remove all ash and fuel from the fire chamber and ensure that it has cooled sufficiently.

Access grates through the ash chamber. Remove the bolt or cotter pin from the broken grate, then remove the grate through the fire chamber.

Place the new grate into position inside the fire chamber and secure with a cotter pin or bolt.

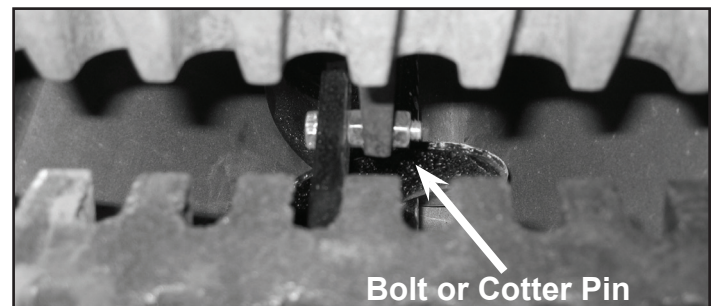
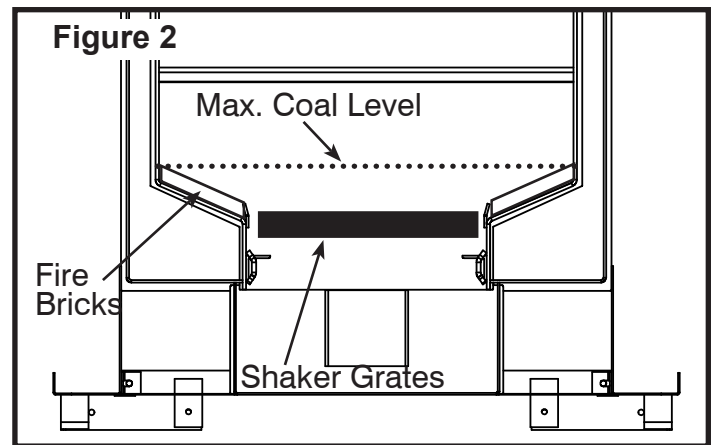
Grates in the back of the furnace may be inaccessible from the ash chamber. If broken grates are inaccessible, remove the first grate. This will allow access to the remaining grates from the fire chamber.

## WARRANTY

Shaker Grates are included in the Cozeburn Outdoor Furnace Warranty under their manufacturer's original one year warranty, provided all operation and maintenance instructions from the Shaker Grate Operation and Maintenance Instructions Sheet and the Cozeburn Installation and Operation Instruction Manual have been followed.

No warranty is extended for the fire bricks.

**DO NOT** modify the Shaker Grate Option. Any modification will void the warranty on the Shaker Grate and the furnace.



### SAFETY PRECAUTIONS

- **Never allow ash to build up to the shaker grates.**
- **Keep ash door closed at all times.**
- **Never fill coal above fire bricks or bottom of door frame.**

