

FREESTANDING CATALOG

ELECTRIC FIREPLACES

Amantii SIERRA FLAME

Freestanding fireplaces where timeless elegance meets modern design. Explore a curated collection of freestanding fireplaces that redefine the art of warmth and ambiance in any space.



Lynwood W76

THE CUBE LUMINA

The Cube three-sided electric fireplace by Lumina is a true innovation in design. With its stunning flame presentation and unique media options, this fireplace offers a captivating view from almost any angle, thanks to its expansive three-sided glass viewing area.

Customization is at the heart of the Cube's design. It comes with a 14PCE oak log set, charcoal grey real fireglass media, and two bags of vermiculite in black and white. Additional media options are available for purchase, allowing you to tailor the look to your preference.

With three distinct styles to choose from, the Cube is perfect for any space, both indoors and out, including bathrooms and kitchens.

KEY FEATURES

- 3 sided built in electric fireplace
- WiFi Compatible to connect and control the fireplace from your smartphone with the use of our app. Available on the Google Play Store and Apple App Store
- Three speed flame motor
- Heat Outdoor 5000 BTU
- No unsightly venting and grills seen. A true clean and vent free look
- Programmable timer & thermostat allows you to decide the temperature of the room. Set your fireplace to turn on before you arrive home or have it automatically turn on when the weather is cold.
- Touch pad for convenient control of the features and temperature display from the fireplace.
- Choose from combinations of yellow, orange and red colored flames
- Approved for indoor or outdoor applications*
- Ambient Canopy Lighting: Choose from 13 colors to illuminate the decorative media, enhancing the overall visual effect.
- Two flame pattern styles – standard and more traditional
- New patented thermostatic remote comes included

IDEAL APPLICATIONS:

- Residential spaces
- Patios
- Outdoor spaces
- Commercial spaces
- Restaurants
- New construction or renovations

TECHNICAL SPECIFICATIONS

Volts	120
Amps	13
Watts	1500 max
Heater On	1500 watts high, 750 watts low
Heater Off	22 watts
Rotor Motor	1 at 5 watts
BTU	5000



INCLUDED ACCESSORIES

Each unit comes with a 14PCE Oak log set, clear and amber fireglass media and two bags of vermiculite, in black and white, and a remote.



Leg Base Dimensions
*Height, Width, Depth: 7x 20 1/2 x 12 5/8

The Cube Lumina with Leg Base and Oak Media Electric Fireplace



The Cube Wall-mount with Glass Media Electric Fireplace



THE FREESTAND FS26 LUMINA

A distinctly European styled free standing electric fireplace from Sierra Flame by Amantii. Featuring a beveled glass viewing area that gives an almost 'see-thru' effect on three sides.

With no installation boundaries, no need for mounting brackets or building into a wall, this free stand model goes in any room you like. Virtually no assembly required - just simply plug in and enjoy!

KEY FEATURES

- 3 Sided panoramic design helps you appreciate the flame in a better view
- WiFi Compatible to connect and control the fireplace from your smartphone with the use of our app.
- Available on the Google Play Store and Apple App Store
- Three Flame Speeds
- New multi programmable remote comes included
- Programmable timer & thermostat allows you to decide the temperature of the room. Set your fireplace to turn on before you arrive home or have it automatically turn on when the weather is cold
- Choose from combinations of red, yellow and orange flame colors
- Touch pad for convenient control of features and temperature display of the fireplace
- Choose from 11 colors of canopy and ember bed lighting to illuminate decorative media from below and above
- Produces up to 5000 BTU of heat, enough to heat up 500 sq ft of space

IDEAL APPLICATIONS:

- Perfect for the cabin
- Basements
- Living rooms
- Den or office
- Bedrooms

TECHNICAL SPECIFICATIONS

Volts	120
Amps	12.5
Watts	1500 max
Heater On	1500 watts high, 750 watts low
Heater Off	22 watts
Rotor Motor	1 at 5 watts
BTU	5000



The Freestand FS26 with Glass Media Electric Fireplace



Flame Presentation



ORANGE FLAME



YELLOW FLAME



RED FLAME

INCLUDED ACCESSORIES

Each unit comes with an 12 piece oak log set and sable fireglass media and a remote.



CAST IRON FREESTAND: E50 & E70

KEY FEATURES

- Real Cast Iron Construction.
- Rated for indoor applications only
- State of the art flame presentation: Vibrant, multi-colored state of the art flame presentation – change from Yellow to Orange to Red with just a click of the remote.
- WiFi App – For complete control from any room. Set the fireplace to turn on before arriving home, or have it turn on automatically when the weather is cold. Customization possibilities are endless.
- Two Flame sets and canopy lighting in 13 color themes, creates the illusion of a real fire
- Flame effect can be used with or without heat
- On demand heat with two heat settings. Thermostat and Hardwire Ready
- Produces up to 5000 BTU of heat, enough to heat up 500 sq. ft
- Upper heat venting
- Includes a multi-function remote
- Fan Noise: 43dB

TECHNICAL SPECIFICATIONS

	E50	E70
Volts	120	120
Amps	12.5	12.5
Watts	1500	1500
Heater	1500 Watts high	1500 Watts high
	75 Watts low	75 Watts low
No Heater	19 Watts	19 Watts
Lamps	LED	LED
	19 Watts	19 Watts
Rotor Motor	1 at 5 watts	1 at 5 watts
Approx. Heating Area	400 sq ft	400 sq ft



Flame Presentation



ORANGE FLAME



YELLOW FLAME



RED FLAME

INCLUDED ACCESSORIES

Each unit comes with a 10 piece log set, charcoal grey real fireglass media and two bags of vermiculite, in black and white, and a remote.





The e70 Electric Fireplace



The e50 Electric Fireplace 10PCE Birch

LYNWOOD W76

With its elegantly refined aesthetics, the W76 not only enhances the visual appeal of wood heating but also revolutionizes the essence of the experience. Crafted from environmentally conscious materials, this cast-iron, non-catalytic fireplace has earned EPA certification, boasting an exceptionally low particle emissions rate.

Behind its expansive doors lies a combustion chamber designed to accommodate a remarkable quantity of logs, ensuring prolonged hours of warmth while adhering to the highest environmental standards. The W76 is a testament to the harmonious blend of aesthetic sophistication and eco-friendly functionality, offering a heating solution that is as visually appealing as it is environmentally responsible.

KEY FEATURES

- EPA Certified
- 78% maximum efficiency
- Massive glass for fire viewing
- Construction: Cast Iron
- Heats up 2000 ft²
- 13,784 to 57,674 BTU/hr
- Log Size – 21"
- Weight: 500 lbs

REQUIRED ACCESSORIES

Mandatory to complete the unit:
Reduce Clearance Heat Shield

IDEAL APPLICATIONS

- Perfect for the cabin
- Basements
- Living rooms
- Den or office
- Bedrooms

SPECS:

Emission Rate (G/Hr) 1.35
 Heat Output (btu/hr) 13,741 – 44,772
 Actual Measured Efficiency(CSA B415.1) 70.2
 Certification EPA 2020
 Type Non Catalytic
 Maximal wood load (kg) 10.5
 Maximal wood load (lbs) 23.14
 Maximal log size 21 inches
 Combustion chamber size (dm³) 44.4
 Combustion chamber size (cu ft) 1.57
 Total Weight (kg) 217
 Total Weight (lbs) 478.4





TRADITIONAL SERIES | FIREPLACE & INSERT ELECTRIC FIREPLACES

FIRE GLASS

Our decorative fire glass media is a beautiful addition to your fireplace. Turn your fireplace into a expressive work of art by simply adding our decorative fire glass media. Our fire glass adds a distinctly modern feel to your gas fireplace - mix colors and textures for a unique appearance.

Our decorative fire glass is tempered and will not melt or degrade, some discoloration is normal on glass that is placed directly on the flame. Always wear protective gloves when handling fire glass media.

One 5lb container of media will cover 1 square foot.

AMSF-GLASS-01



AMSF-GLASS-02



AMSF-GLASS-03



AMSF-GLASS-04



AMSF-GLASS-05



AMSF-GLASS-06



AMSF-GLASS-07



AMSF-GLASS-08



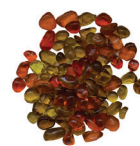
AMSF-GLASS-09



AMSF-GLASS-10



AMSF-GLASS-11



AMSF-GLASS-12



AMSF-GLASS-13



AMSF-GLASS-14



AMSF-GLASS-15



AMSF-GLASS-16



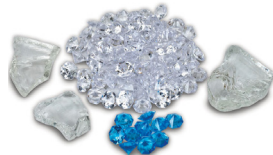
FI-105-DIAMOND



FI-107-DIAMOND



FI-109 DIAMOND



CLEAR



Images are not to scale, please visit your local dealer to view the actual accessories.

Variations in the color and shade are inherent in all printing processes, the actual colors may vary slightly from those shown.

Note: Log sets and Designer Media Kits will fit in all sizes of the following models - Panorama DEEP, TRU VIEW XL and CUBE ONLY. (Depending on the size of the fireplace model, some logs may not be needed.)

DESIGNER MEDIA KITS

Add incredible value with designer media kits including deluxe log sets, glass and stone media and decorative embers.

DESIGN-MEDIA-BIRCH-10PCE



DESIGN-MEDIA-OAK-10PCE



DESIGN-MEDIA-NATURAL-8PCE



DESIGN-MEDIA-14PCE



DESIGN-MEDIA-BIRCH-15PCE



DESIGN-MEDIA-15PCE



DESIGN-MEDIA-6PCE



DESIGN-MEDIA-SPLIT-LOG-16PCE



DESIGN-MEDIA-BIRCH-12PCE



For XT & XT Bespoke models only

The NEW Design Media Birch 12 piece log set expands the Design Media Birch 15 piece log set, if required, and is available for purchase.

DESIGN-MEDIA-OAK-14PCE-XS



DESIGN-MEDIA-OAK-12PCE-MD



DESIGN-MEDIA-OAK-12PCE-LG





AMSF-FREESTAND-US

AUG 12 2024

Distributed By:

Product updates, specifications and dimensions are subject to change. Please refer to the product manual to verify measurements and clearance requirements. All local building codes must be followed.

Amantii

SIERRA FLAME

Visit our online showrooms at:

www.amantii.com

www.sierraflame.com