



# Napoleon® Gas Burning Stoves





## From our family to yours

With over 35 years in the hearth industry, we are able to offer you a wide range of products, all proudly carrying the President's Limited Lifetime Warranty. The years of experience, care and quality results in the creation of hearth products that possess a timeless and enduring style, worthy of a place in your home.

As the largest, family owned hearth products and gas grill manufacturer in North America, we invite you to experience the complete family line-up of Napoleon® wood, gas, electric and pellet burning fireplaces, inserts and stoves. Our products are available for viewing at an authorized Napoleon® dealer nearest you or online at [napoleonfireplaces.com](http://napoleonfireplaces.com).

# WHY NAPOLEON?



## Making your life easier...

Napoleon® gas stoves are designed to provide you absolute comfort and control at the touch of your fingertips. It's that easy. When you install a Napoleon® gas stove, you can rest assured that you will enjoy a lifetime of instant ambiance with reliable performance year after year.

## An investment you can count on...

Your new Napoleon® gas stove adds value to your home while at the same time giving you uncompromising comfort and a reliable heating source. Nothing to lose and everything to gain.

## Create your personal design statement...

Surround yourself with a home environment that makes you feel good, relaxed and proud to reflect your decorating style. Thousands of designer options are available to create the exact statement you have been looking for.

## Highest efficiencies, maximum comfort...

Years of research, design and testing have enhanced optimum performance allowing Napoleon® products to achieve some of the highest heater rating efficiencies on the market. Napoleon® continuously surpasses industry standards not only in appearance but in efficiency and performance.

## Beautiful fires, best flame in the industry...

With advanced burner technology and innovative design, Napoleon's flame and exclusive PHAZER® log sets are so realistic it's hard to tell the difference from a real wood burning fire.

## Authorized dealer support network...

With over 3,000 reputable authorized dealers across North America and Europe, Napoleon® provides professional and consistent training and technical support to ensure your stove is installed by a certified, reputable installation technician.

## Outstanding Reliable Warranty...

Each and every Napoleon® gas stove is designed and manufactured to strict quality testing standards and backed by the President's Limited Lifetime Warranty, guaranteed to give you the solid performance you deserve. (Registered under the world recognized ISO 9001-2008)



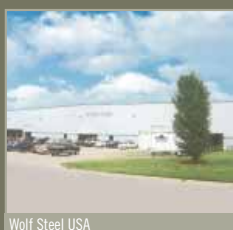
Wolf Steel Manufacturing



Napoleon Appliance Corp.



Wolf Steel Montreal



Wolf Steel USA



Made In  
North America



Wolf Steel Corporate Offices

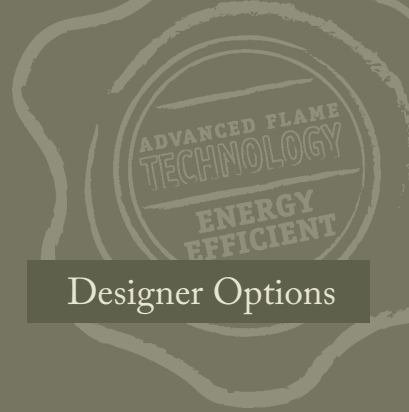
### Legend

- Advanced Burner System  
YELLOW DANCING FLAMES®
- Optional Heat Circulating Blower  
(Standard with GDS28 & GDS50)
- Radiant Heat
- Optional Full Function  
Digital Remote
- No Electricity Required to Light  
or Operate
- Money Saving
- Built-in NIGHT LIGHT™

*Castlemore*<sup>™</sup>  
Cast Iron



Shown in Porcelain Summer Moss Finish with Porcelain Reflective Radiant Panels and Granite Ubatuba Green top inset and side panels



## Designer Options

# The Castlemore™ GDS26 - Cast Iron Gas Stove

The Castlemore™ GDS26 cast iron gas stove adds more than just a reliable heating source to a home. With its sleek curves and tall, slender stature, it becomes the ultimate focal point for any room. The classic European design will never go out of style and the heating power will provide a lifetime of enjoyable comfort.



Built-in NIGHT LIGHT™

### Finishes

The Castlemore™ is available in four inspiring designer colours



Metallic Black Finish



Porcelain Summer Moss Finish



Porcelain Winter Frost Finish



Porcelain Majolica Brown Finish



GDS26 converts easily from top vent to rear vent making installation possibilities endless... even in an existing fireplace

### Decorative Panels



#### MIRRO-FLAME™

Porcelain Reflective Radiant Panels



Decorative Sandstone Stone

### Optional Inset and Side Panels

(Natural stone will have variances in colours and patterns)



Lorena Slate



Ubatuba Green



Giallo Golden Brown

### Optional Remote Controls



Model	BTU'S (Input)		Height	Front Width	Depth	Glass Size	
	Natural Gas	Propane	Actual	Actual	Actual	Height	Width
GDS26	25,000	25,000	35 1/2"	23 5/8"	18 1/8"	24"	16 5/8"

Model	Glass Type	Efficiencies			Mobile Home Certified	Electronic Ignition
		EnerGuide	AFUE	Steady State		
GDS26	Ceramic	61.3%	-	82%	Yes	Yes

Minimum Clearances To Combustibles			
Model	Corner	Rear	Sides
GDS26	2"	5"	2"

### Exclusive PHAZERAMIC™ Burner System



Creating an incredible glowing ember bed with infrared heat

ADVANCED FLAME  
TECHNOLOGY  
ENERGY

## Features and Designer Options



Easy access hidden control panel



Solid cast iron, European design



45° venting for versatile horizontal or vertical installations

### Decorative Finishes



Painted Black Finish



Porcelain Majolica Brown Finish

### Decorative Panels



#### MIRRO-FLAME™

Porcelain Reflective Radiant Rear Panel

### Optional Inset and Side Panels

(Natural stone will have variances in colours and patterns)



Lorena Slate



Ubatuba Green

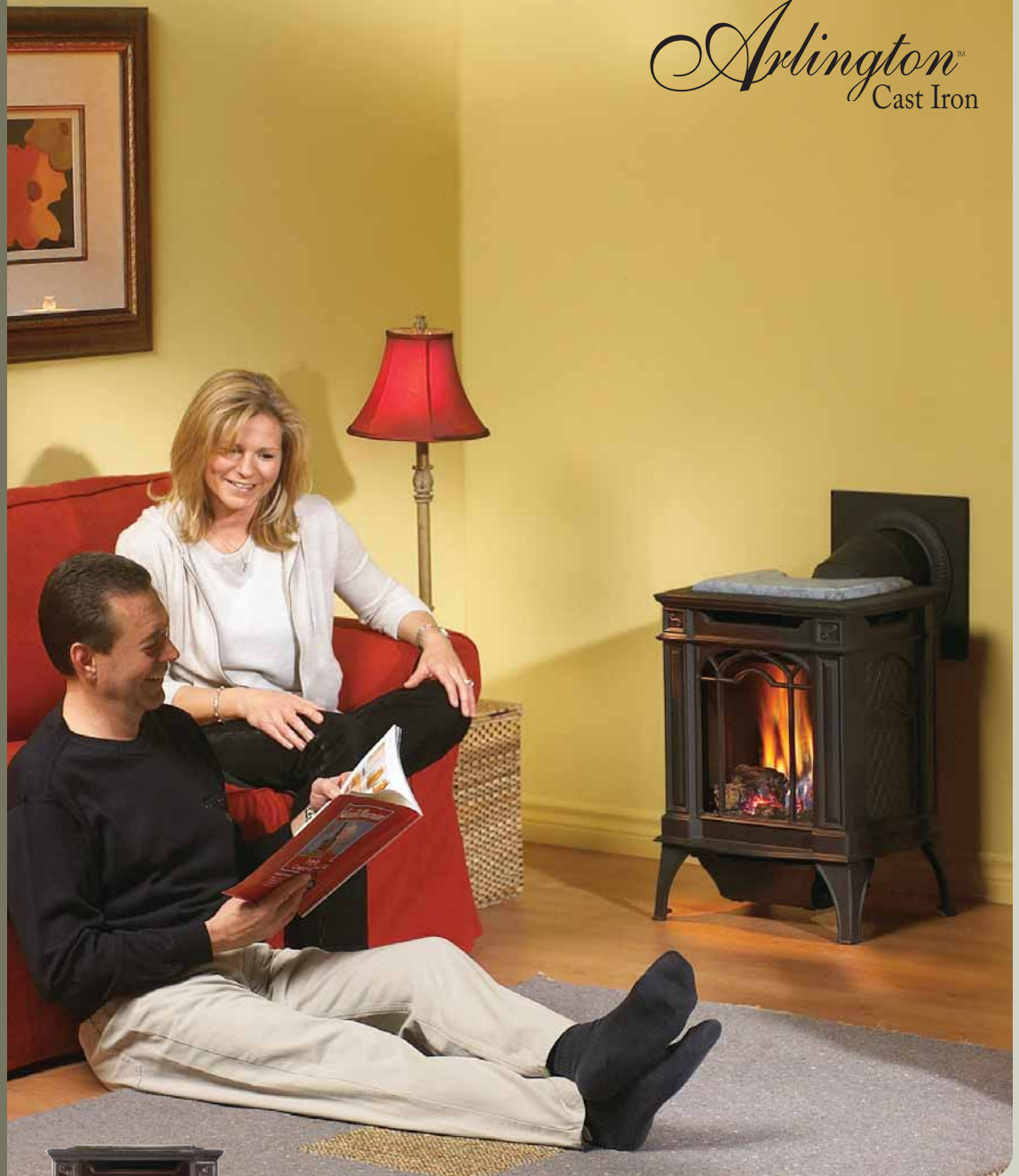


Giallo Golden Brown

### Optional Remote Controls



Arlington™  
Cast Iron



## Arlington™ GDS20 Compact in Size - Huge in Style

The Arlington™ cast iron gas stove, with its slender, space saving design and 45° venting, is perfect for smaller room applications. Even though small in size, it holds a large PHAZERAMIC™ burner system and brightly glowing ember bed, viewed through the European styled ceramic glass viewing area. MIRRO-FLAME™ Porcelain Reflective Radiant Rear Panel comes standard with the Arlington™.

Model	BTU's (Input)		Height	Front Width	Depth	Glass Size	
	Natural Gas	Propane	Actual	Actual	Actual	Height	Width
GDS20	20,000	20,000	25 3/8"	19 1/4"	15 3/4"	18"	14"

Model	Glass Type	Efficiencies			Mobile Home Certified
		EnerGuide	AFUE	Steady State	
GDS20	Ceramic	60%	-	78%	Yes

Minimum Clearances To Combustibles			
Model	Corner	Rear	Sides
GDS20	2"	2"	4"

#### Exclusive PHAZERAMIC™ Burner System



Creating an incredible glowing ember bed with infrared heat



# The Bayfield™ Cast Iron



## Designer Options

### Decorative Finishes



Painted Black Finish



Porcelain Summer Moss Finish



Porcelain Majolica Brown Finish

Porcelain Winter Frost Finish shown on left



Decorative Screen



Built-in NIGHT LIGHT™

### Decorative Panels



Decorative Sandstone Brick



**MIRRO-FLAME™**  
Porcelain Reflective Radiant Panels

### Optional Inset and Side Panels

(Natural stone will have variances in colours and patterns)



Lorena Slate



Ubatuba Green



Giallo Golden Brown

### Optional Remote Controls



## The Bayfield™ GDS25 Your choice of four designer colours

This remarkable cast iron stove comes in four designer colours that will look great in any home or cottage. The built-in secondary heat exchanger provides excellent heating efficiency and heat retention. Other features include a cost saving electronic ignition with battery back-up, 50% flame/heat adjustment, ceramic glass, standard on/off switch and an exclusive NIGHT LIGHT™ which creates a warm glow even when the stove is not operating.

Model	BTU's (Input)		Height	Front Width	Depth	Glass Size	
	Natural Gas	Propane	Actual	Actual	Actual	Height	Width
GDS25	24,500	23,000	25 5/8"	23 1/2"	17 1/2"	18"	15"

Model	Glass Type	Efficiencies			Mobile Home Certified	Electronic Ignition
		EnerGuide	AFUE	Steady State		
GDS25	Ceramic	64.1%	64%	80%	Yes	Yes

#### Minimum Clearances To Combustibles

Model	Corner	Rear	Sides
GDS25	2"	2"	4"

#### Exclusive PHAZERAMIC™ Burner System

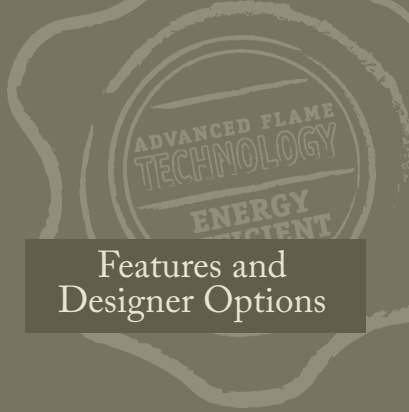


Creating an incredible glowing ember bed with infrared heat









## Features and Designer Options

# GDS60-1 Cast Iron Gas Stove

Napoleon's GDS60 has always been successful and in popular demand for its solid performance and impressive heating efficiencies. Now with its new elegant fine detailing and sleek, more sophisticated outer casting design, the GDS60-1 offers much more than its original superior capabilities.



### Napoleon® Exclusive Features

- Larger viewing area with its new updated design
- ACS (Anti-Condensation Switch) controls pilot usage for cold climate installations
- PHAZER® log set and glowing ember bed produces the most realistic wood burning appearance
- Fuel saving electronic ignition with battery back-up and on/off switch
- Built-in adjustable flame/heat control for maximum comfort and efficiency
- One standard front design and a sleek, sophisticated outer casting design
- Converts easily from top vent to rear vent
- Convenient remote control (on/off or thermostatic)
- Decorative cast iron trivets for rear vent installations (available in painted black or chrome plated)
- B-Vent adaptor kit
- Certified for bedrooms, bathrooms, bed sitting rooms and mobile homes
- President's Limited Lifetime Warranty



See page 13 for details

Model	BTU's (Input)		Height	Front Width	Depth	Glass Size	
	Natural Gas	Propane	Actual	Actual	Actual	Height	Width
GDS60-1	35,000	31,500	31 1/4"	27"	19 1/2"	18 3/4"	21"

Model	Glass Type	Efficiencies			Mobile Home Certified	Electronic Ignition	ACS Switch**
		EnerGuide	AFUE	Steady State			
GDS60-1	Ceramic	63.1%	64%	78%	Yes	Yes	Yes

Minimum Clearances To Combustibles			
Model	Corner	Rear	Sides
GDS60-1	2"	6"	6"

### Decorative Finishes



Painted Metallic Black Finish



Porcelain Majolica Brown Finish

### Cast Iron Trivets

(for rear vent installation)



Painted Black Finish



Chrome Plated

### Decorative Panels



Decorative Sandstone Brick

### Andirons

Painted Black Finish



### Optional Remote Controls



ADVANCED FLAME  
TECHNOLOGY  
ENERGY  
EFFICIENT

## Designer Options

### Accent Bar and Doors



Painted Black Finish



Satin Chrome Plated



24 Karat Gold Plated

### Trivets



Satin Chrome Plated



24 Karat Gold Plated

Painted Black Trivet Comes  
Standard With Unit

### Andirons

24 Karat Gold Plated  
or Painted Black Finish



### Optional Remote Controls



Shown with traditional painted black door, trivet and accent bar



Shown with satin chrome door, trivet and accent bar

## GDS28 Dynamic Compact Design

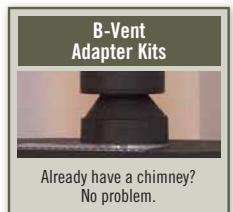
Good things do come in small packages! If you have limited space but still desire the beauty and convenience of a gas stove... the GDS28 is the answer! Offering a variable heat range up to as much as 30,000 BTU's, this stove may be compact in stature, but not in power!

Blower Included 

Model	BTU's (Input)		Height	Front Width	Depth	Glass Size	
	Natural Gas	Propane	Actual	Actual	Actual	Height	Width
GDS28	30,000	26,000	26 3/4"	22 1/2"	18 1/2"	12 3/8"	21"

Model	Glass Type	Efficiencies			Mobile Home Certified
		EnerGuide	AFUE	Steady State	
GDS28	Ceramic	57.4%	65%	85%	Yes

Minimum Clearances To Combustibles			
Model	Corner	Rear	Sides
GDS28	1"	2"	7"

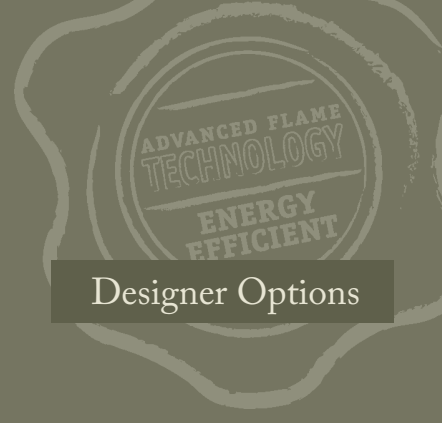


Already have a chimney?  
No problem.

See page 13 for details



B-Vent adaptable.\*Applicable to Direct Vent only.



## Designer Options

### Accent Bar and Doors



Painted Black Finish

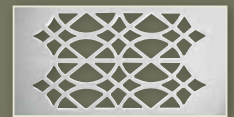


Satin Chrome Plated

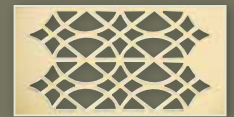


24 Karat Gold Plated

### Trivets



Satin Chrome Plated



24 Karat Gold Plated

Painted Black Trivet Comes Standard With Unit



Shown with traditional painted black door, trivet and accent bar

Shown with satin chrome plated door, trivet and accent bar

## GDS50 Turbo Boost Heating Power

This sophisticated gas stove offers many benefits - a built-in blower, extra large heat exchanger, easily accessible controls, solid body construction and a triple state-of-the-art burner system allowing superior heating efficiency. This, combined with clean-burning, environmentally friendly technology, makes the GDS50 the perfect choice to add long-lasting value to your home!

Blower Included 

Model	BTU's (Input)		Height	Front Width	Depth	Glass Size	
	Natural Gas	Propane	Actual	Actual	Actual	Height	Width
GDS50	44,000	40,000	30 3/4"	28 1/4"	21 5/8"	13 7/8"	25 3/4"

Model	Glass Type	Efficiencies			Mobile Home Certified
		EnerGuide	AFUE	Steady State	
GDS50	Ceramic	70%	67%	84%	*Yes

Minimum Clearances To Combustibles			
Model	Corner	Rear	Sides
GDS50	1"	2"	7"



### B-Vent Adapter Kits

Already have a chimney? No problem.

See page 13 for details

### Andirons

Painted Black Finish



### Optional Remote Controls



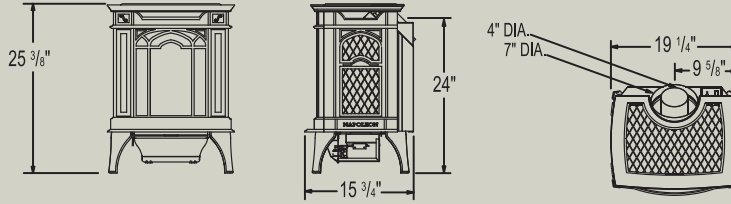
B-Vent adaptable.\*Applicable to Direct Vent only.



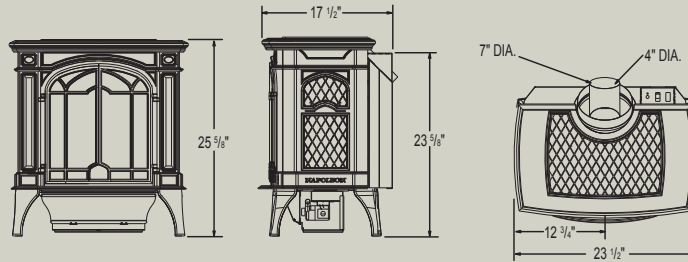
# Gas Stove Dimensions

Model

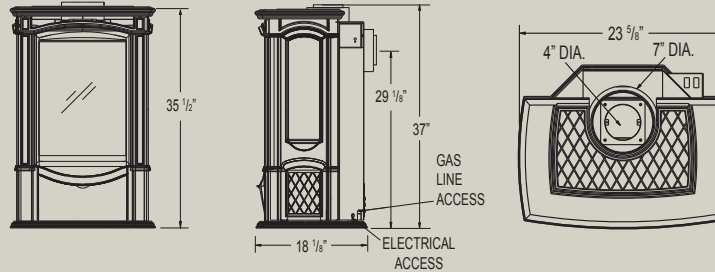
GDS20  
Arlington™



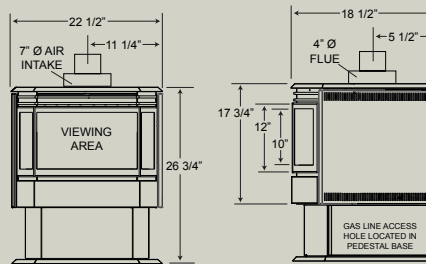
GDS25  
Bayfield™



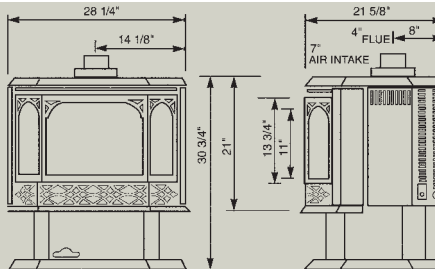
GDS26  
Castlemore™



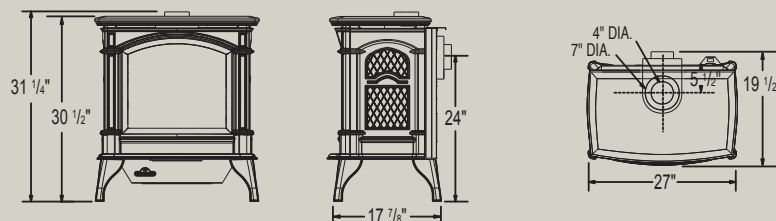
GDS28



GDS50



GDS60-1





# Outstanding Features of Napoleon's Advanced Technology



## Advanced Burner Technology

Napoleon's sophisticated burner system offers superior flame technology. Strategically placed burner ports create the most realistic flames in the industry.



## Finely Tuned Precision Valves

Surrounded with a protective cast aluminum jacket, the precision valves allow for ultimate reliability and 100% SAFE GUARD™ gas control system.



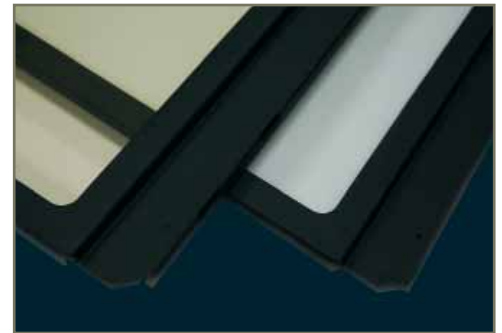
## Exclusive NIGHT LIGHT™

The exclusive ceramic glass NIGHT LIGHT™ illuminates the decorative firebox even when the fireplace is turned off.



## Outstanding Craftsmanship

Napoleon's distinctive porcelain enamel is glass finish baked onto cast iron at 1800 °F to give you a deep, lustrous, scratch resistant and easy to clean surface. Majolica is a unique double porcelainizing process offering a rich, luxurious, long lasting finish.



## High Heat Ceramic Glass

Unlike tempered glass, ceramic glass is made to withstand extreme high temperatures, allowing maximum radiant heat performance and safety.



## WHISPER QUIET™ Heat Circulating Blower System

The extreme heat resistant "H" class bearings featured in Napoleon's superior heat circulating blower, creates a lasting "whole home" comfort with adjustable high & low speeds.



## Convenient Remote Controls

Napoleon's remotes with digital read out and thermostatic control give you the comfort level you need at the touch of a button. The F50 remote is available in three stylish designer colours - red, grey and black.



## B-Vent Adapter Kits

Already have a chimney? No problem! The direct vent stove easily converts into a convenient B-Vent using Napoleon's exclusive B-Vent Adapter kit, including a standard built-in safety spill switch with automatic reset.

# The Next Generation of Fireplace Design



Napoleon's Fireplace Design Studio (FDS) allows you to design, visualize and price the perfect fireplace for your home! It's easy, it's fun and you can upload a picture of your room to see exactly how it will look. Try it out now at [napoleonfireplaces.com/FDS](http://napoleonfireplaces.com/FDS)  
Also available as an iPhone App.



## Other Napoleon® Products



Fireplace Inserts



Outdoor Living Products



Wood Burning Fireplaces



Modern Direct Vent Fireplaces



Waterfall Collection



Vent Free Fireplaces



Electric Fireplaces



Direct Vent Fireplaces

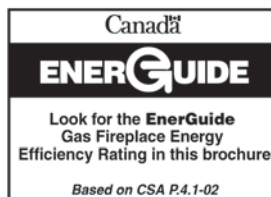


Gourmet Gas Grills

Consult your owner's manual for complete installation instructions, accurate framing dimensions and proper clearances to combustible material. Check all local and national building codes and gas regulations. All specifications are subject to change without prior notice due to on-going product improvements. Products may not be exactly as shown. Napoleon® is a registered trademark of Wolf Steel Ltd. © Wolf Steel Ltd.



• 103 Miller Drive, Crittenden, Kentucky, USA 41030  
• 24 Napoleon Road, Barrie, Ontario, Canada L4M 0G8  
Tel: 705-721-1212 Fax: 705-722-6031  
[napoleonfireplaces.com](http://napoleonfireplaces.com)



Authorized Dealer



Printed in Canada  
ADB250 05/2011